

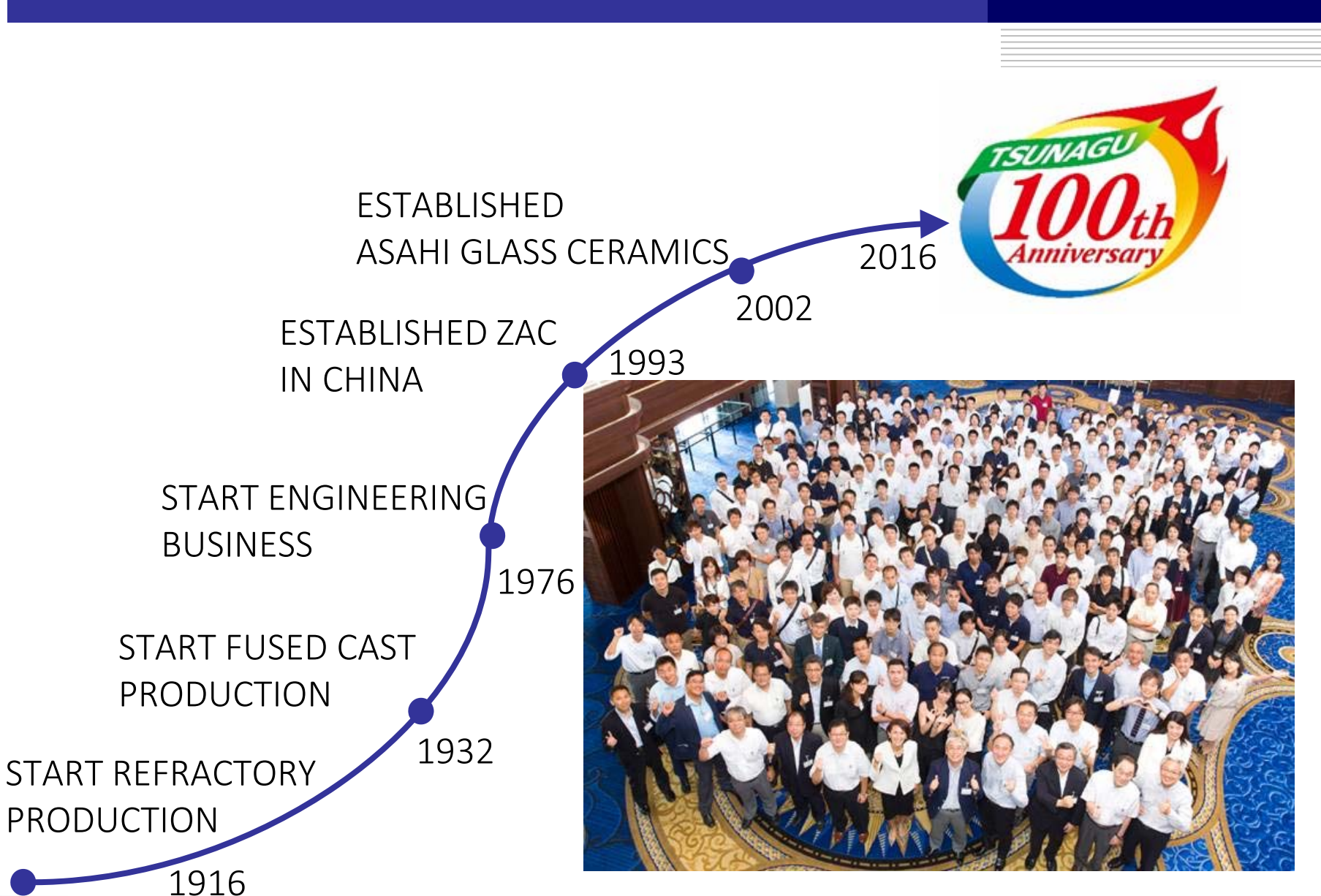


# Earth Saving

---

**AGC** AGC CERAMICS CO., LTD.

# COMPANY HISTORY



# COMPANY MANAGEMENT POLICY

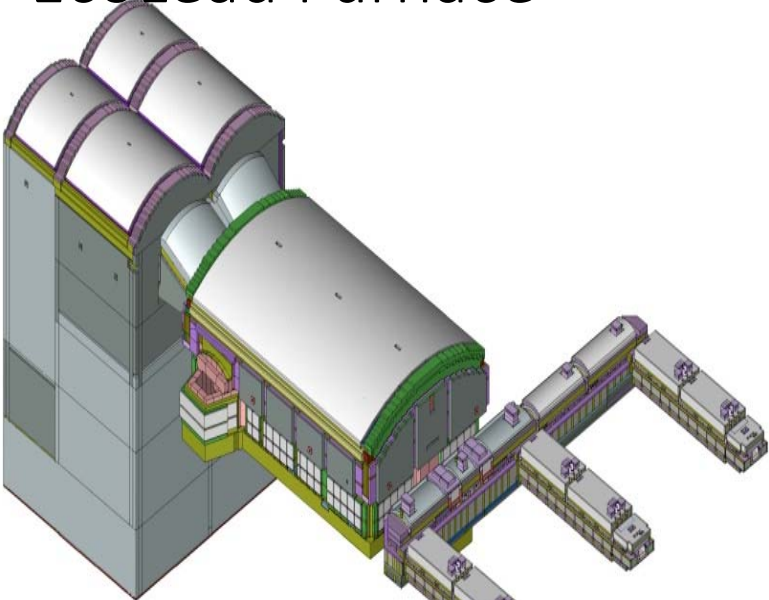
---



AGC CERAMICS group will create new value through ceramics to protect the global environment

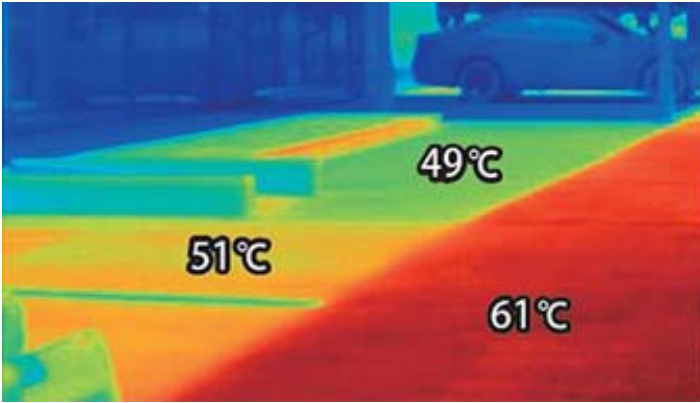
# UNIQUE PRODUCTS

EcoLead Furnace™

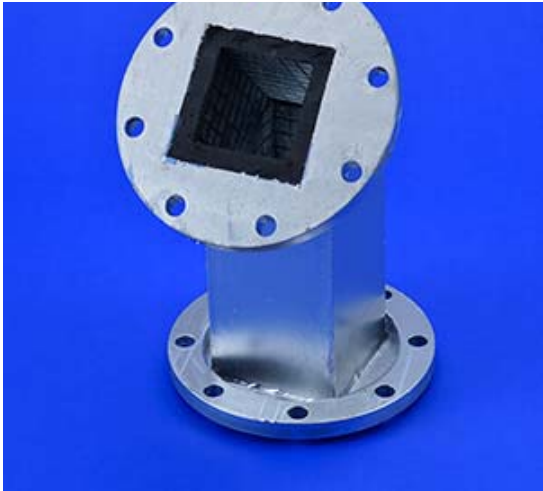


4th Gen. Hyp. Reg. + Thermotect Wall™

## HEAT SHIELD PAVEMENT



## ABRATION RESISTANT CERAMICS



# FEATURES OF THERMOTECT™

## ■ 1.High thermal resistance

- Applicable over 1600°C

## ■ 2.High thermal insulation properties

- Equivalent efficiency to conventional insulation brick

## ■ 3.Low shrinkage

- Linear shrinkage after heating at 1600°C hardly changes

## ■ 4.Easy on-site installation

- Either castable or Pre-cast block

## ■ 5.Perfect prevention of gas leakage

- Reduction of the amount of the fuel used

## ■ 6.Human body-friendly

- Non Refractory Ceramic Fiber (RCF)



# Grand Prize

Grand Prize for Excellence in Energy Efficiency and Conservation

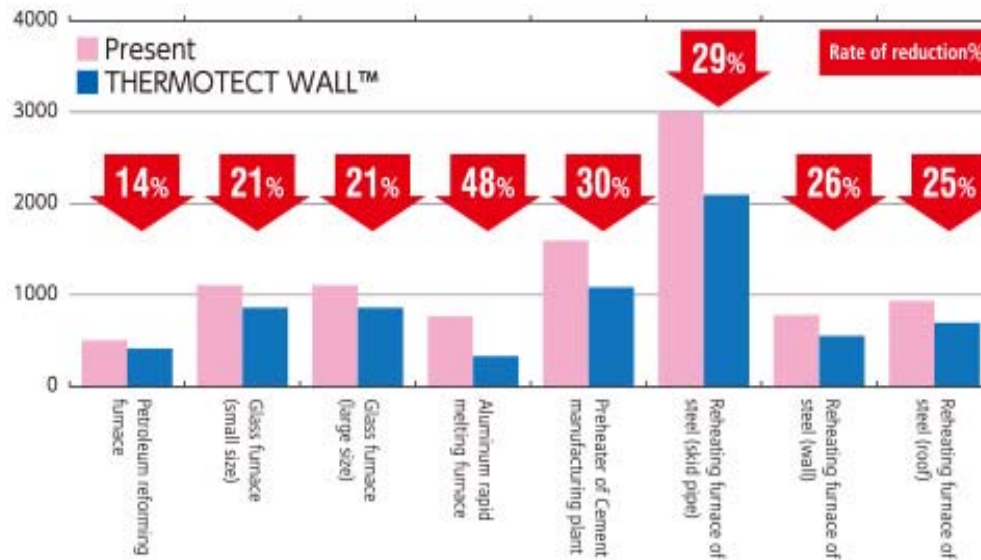


Efficiency of energy saving (trial calculation for industrial furnaces)

Reduced amount of heat loss (GJ/annual) per each plant

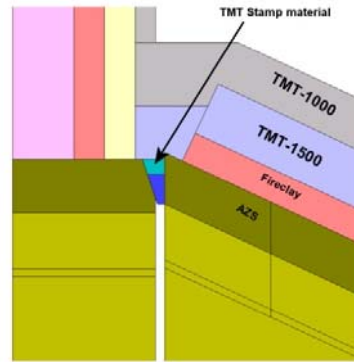
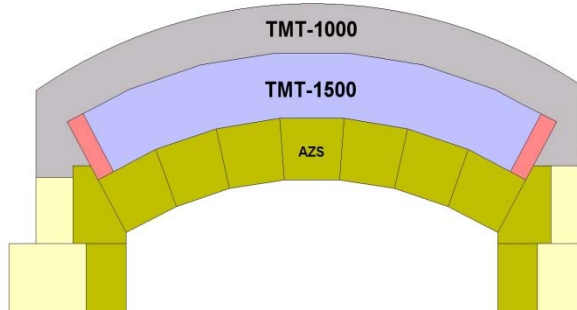


Amount of heat loss per m<sup>2</sup> (W/m<sup>2</sup>)

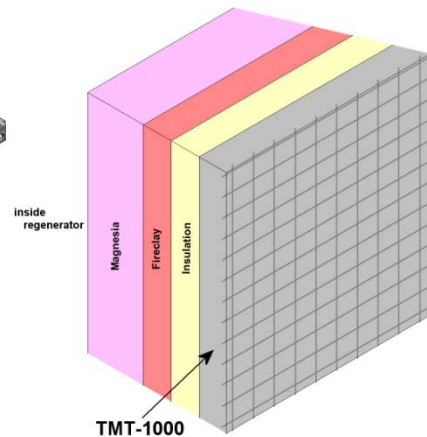
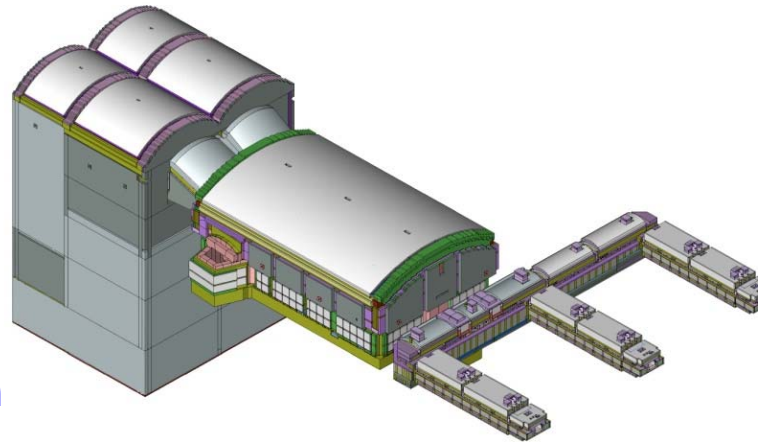


# Application Sample

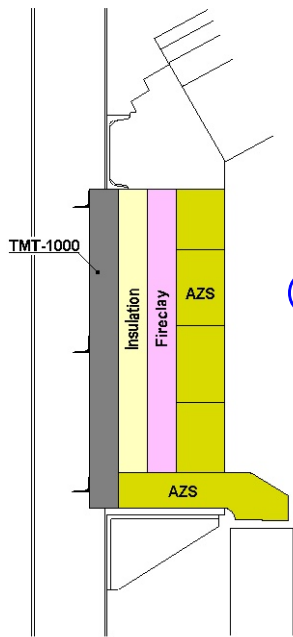
## ② Application for Port



## ③ Application for Regenerator wall

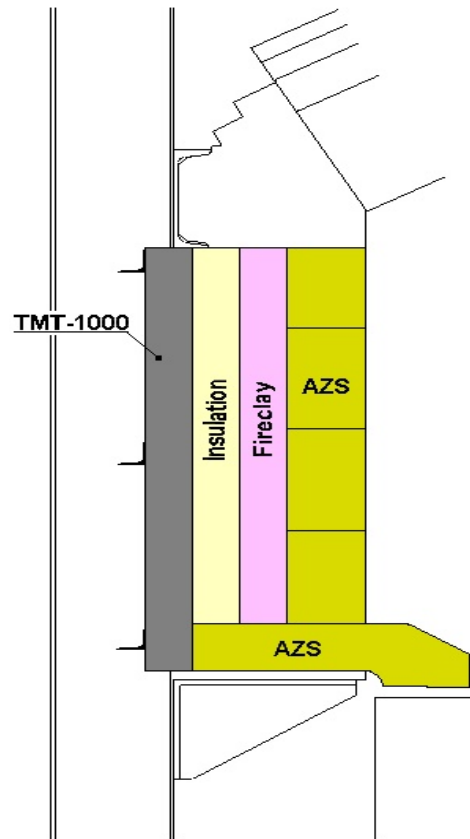


## ① Application for Superstructure



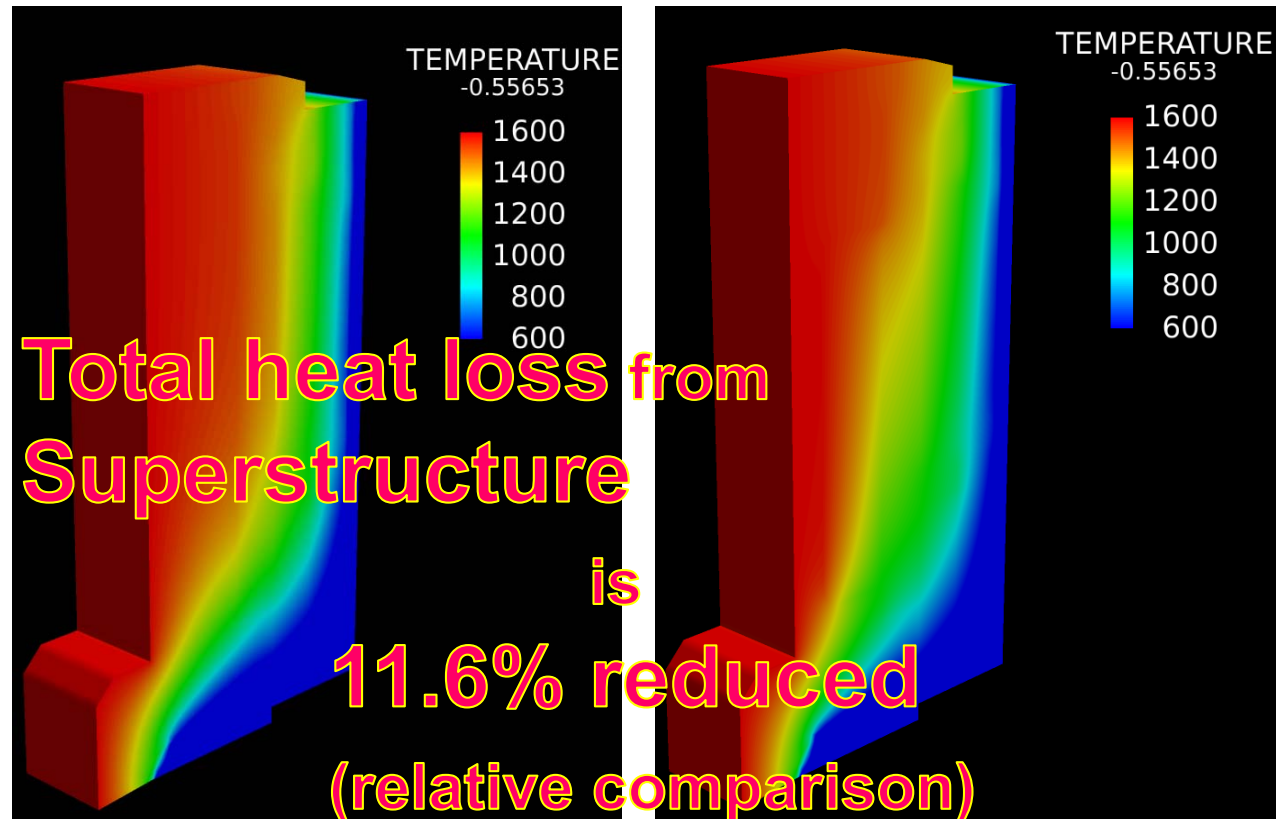
# Application for Superstructure

## THERMOTECT WALL™



CONVENTIONAL SUPERSTRUCTURE

THERMOTECT WALL™





# Application for Port THERMOTECT WALL™

Conventional insulation for Port



Unique Port design with THERMOTECT™  
and THERMOTECT™ stamp material



Heat loss

Total heat loss from Port

is

11.7% reduced  
(relative comparison)

Before  
THERMOTECT™ sealing

After  
THERMOTECT™ sealing

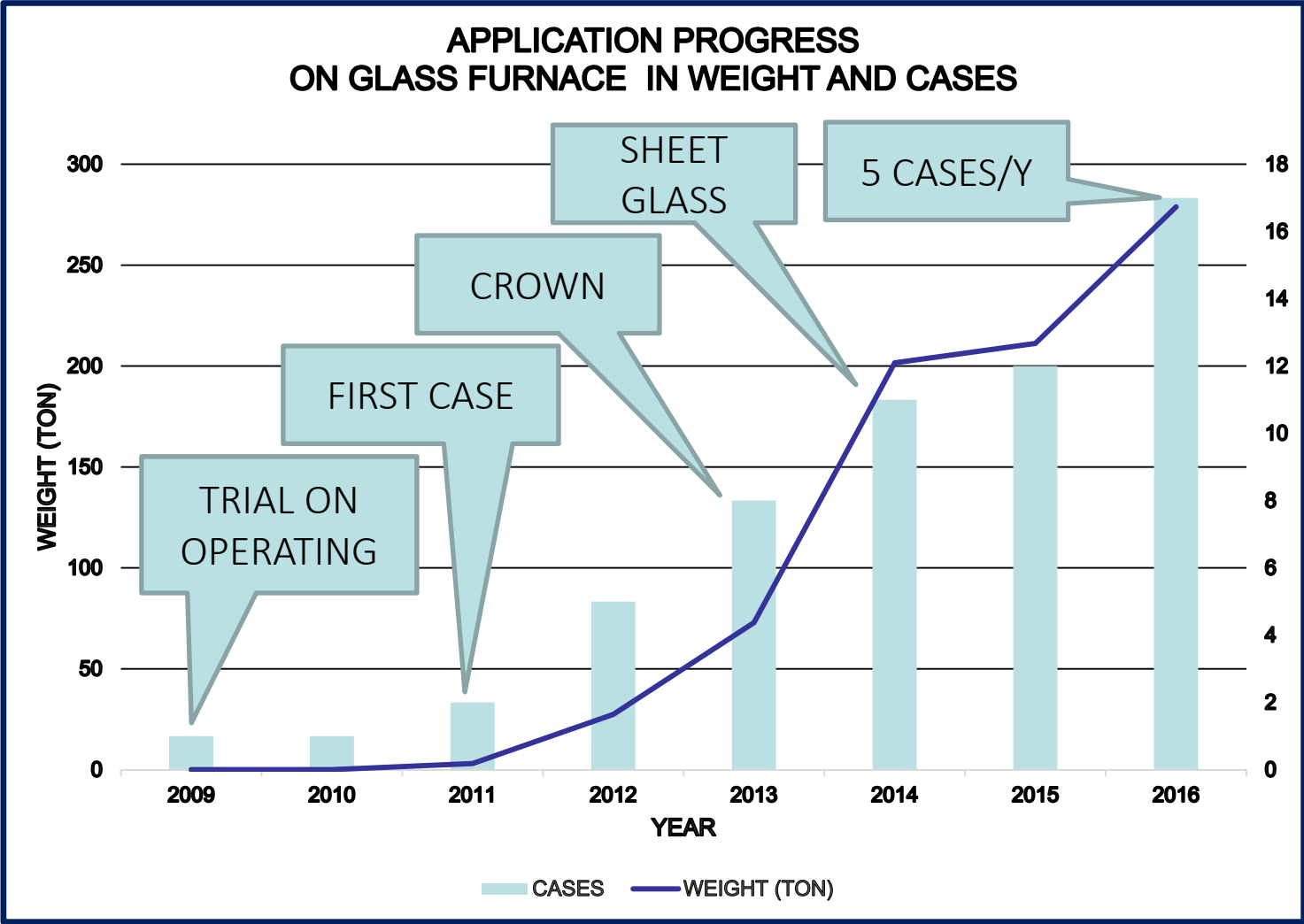
# Challenge on Silica Crown

---

Feature on Silica crown application

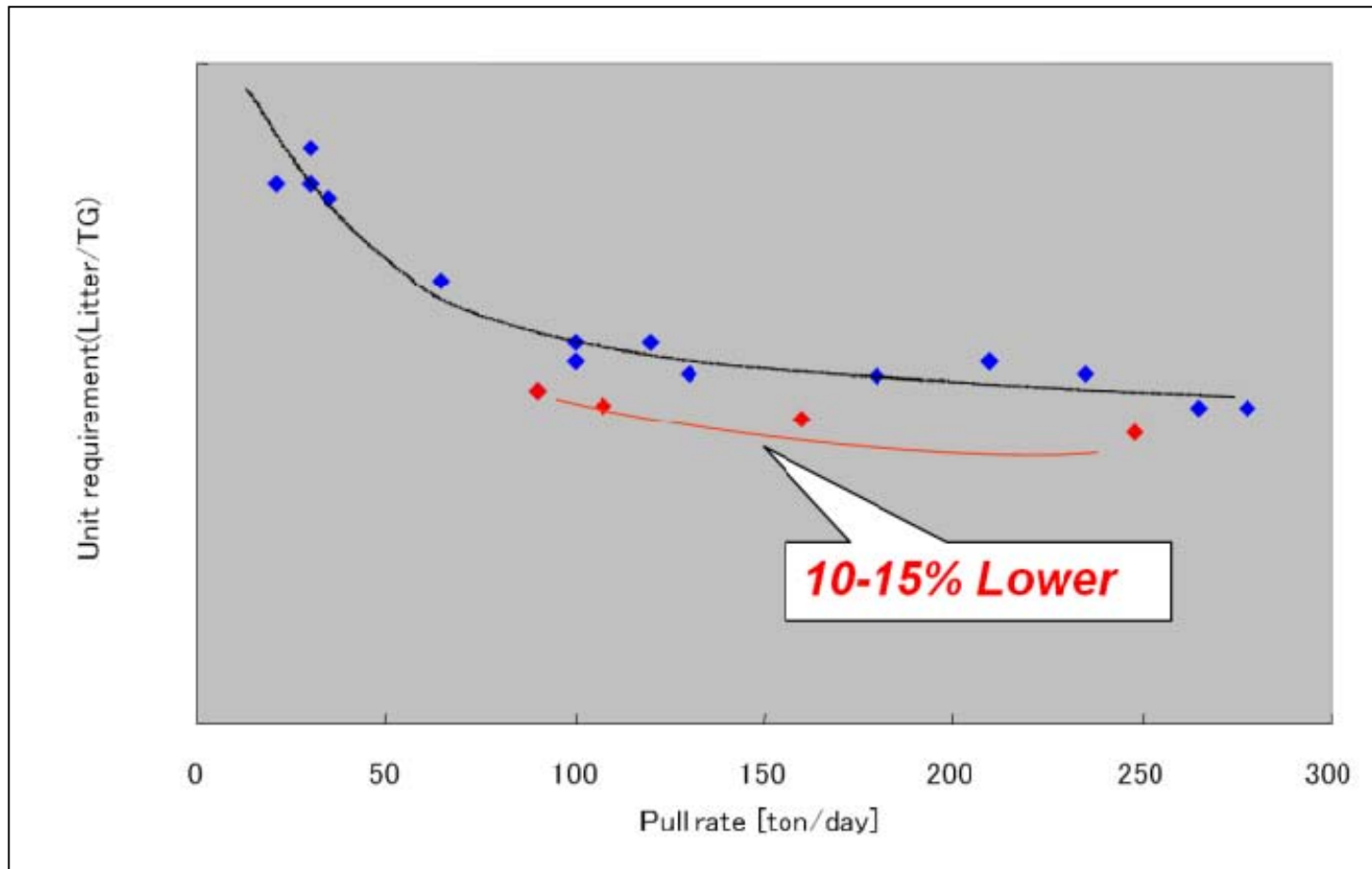
- Joint is sealed by mortar basically
- Low applying merit by silica's lower thermal conductivity performance
- Expected to be closer Silica's refractoriness under load temperature.
- Need to demolish insulation in case of Rat hole
  
- ★ Low Aging degradation is confirmed on real furnace application
- ★ Non RCF contained and Human friendly

# Delivery record



# Result of Energy Saving

## Fuel Consumption record on AGCC's Delivered





END